

AHS ■ VARIOFLEX MOBILE

On-floor roller brake testers for cars and trucks

HIGH-TECH-PRODUCTS
MADE IN GERMANY

**Straightforward and
flexible - mobile
inspection concept
from AHS**

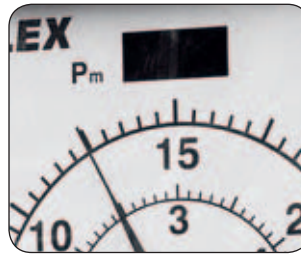


AHS ■ PRÜFTECHNIK

www.ahs-prueftechnik.de info@ahs-prueftechnik.de



Special locks and silicon seal for easy maintenance and care



Preparation for pressure transmitters, brake force imbalance, reverse mode and weighbridge

VARIOFLEX
easy
STOP P_s P_m STOP

15 15
0 3 20 0 3 20
5 1 2 4 5 25 5 1 2 4 5 25
0 6 0 6 0 30 0 30
kN kN

AHS PRÜFTECHNIK OFF READY ON

LED indicator lights with very long lifetime

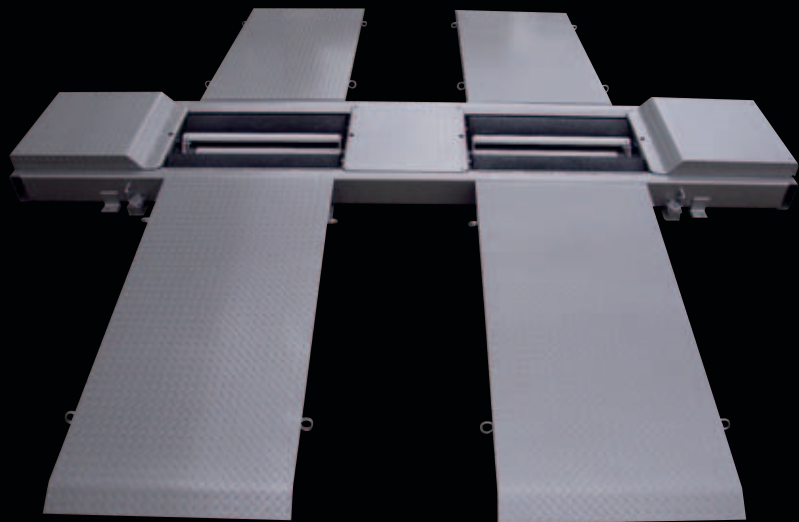
Visual control via traffic light system and large analogue scales

Optional: Mobile trolley for display cabinet

VARIOFLEX ON-FLOOR & MOBILE - UNLOAD, SET UP, TEST: IT IS AS SIMPLE AS THAT!

Complex foundation work and problems with rented properties belong to the past. The AHS Varioflex On-floor and Mobile can be operated stationary or mobile and is always equipped with technology fulfilling highest demands.

The height of only 21 cm also allows the testing of cars. Many public authorities, forwarders, bus operators, companies with large fleets and military utilities in Germany and abroad use the AHS Varioflex On-floor and Mobile due to his easy handling and robust construction.



Single-piece or two-piece roller bed, only 21 cm high. Low-loader version available, too

Long-living fully plastic-corundum coated rollers for extreme usage

2 x 10 kW motors or optionally 2 x 11 kW motors (standard for Varioflex 260)

Preparation for weighbridge (standard)

Compact transport, quick set up



Different ramps: either insertable or movable up- and downward by manual hydraulic pump

FAST. EFFECTIVE. SIGNIFICANT.

The AHS VARIOFLEX On-floor & Mobile can be upgraded with a complete PC system or notebook and workshop-righteous solutions for its storage. The testing software PICARO II was developed especially for the needs of workshops. It includes a completely automated test procedure, numerous editing and storage possibilities as well as the use of reference measurements. The integration in a network is possible. The significant test report includes not only all relevant measurements, but also detailed graphics and is an effective tool for sales promotion.

Robust, portable suitcase for notebook and printer



ON-FLOOR & MOBILE



Especially for vehicles with multiple driven axles (rigid joint): Boogie (free running) roller platform integrated in ramp, incl. installation frame (see pic. left side)

Mobile high-tech test lane

There are many accessories available for the On-floor & Mobile. It can be upgraded to a complete test lane with weighbridge, pressure transmitters, pedal force meter, side slip tester and joint play detector.

Options

- Thermostat-controlled cabinet heating
- Protective cover with clear area for display
- Ramps movable up- and downward by manual hydraulic pump
- 2 x 11 kW high-performance flat gear motors, specially designed and reinforced, easy-running and splash-proofed, measuring and display range 0-8 and 0-40 kN (standard for Varioflex 260)
- 2 x electronic motor brake for 11 kW motors
- Portable, robust suitcase for notebook and printer
- Software package PICARO II
- Axle weighbridge (single-piece roller bed) or wheel- and axle weighbridge (two-piece roller bed)
- Pneumatic or hydraulic pressure transmitters (either with hose set or radio-controlled)
- Pedal-force-meter
- Boogie (free running) roller platform, integrated in ramp

AHS ■ VARIOFLEX MOBILE

On-floor roller brake testers for cars and trucks

Standard Equipment	306	260
Single-piece or two-piece roller bed	✓	✓
Fully-plastic-corundum coated rollers Ø in mm	190	260
Rollers at same level	✓	✓
Testing width min./max. in mm	800/2900	800/2900
Splash-proof spur gear motors, easy-running	✓	✓
High-performance flat gear motors, specially designed and reinforced	-	-
Drive power in kW	2x10	2x11
30 m signal cable for connection of roller bed/cabinet	✓	✓
Start on protection against external drive (wrong drive-out during stopped rollers)	✓	✓
Sidewise delayed star/delta activation of the motors	✓	✓
Modern, low-maintenance strain gauge system	✓	✓
Manual operation or automatic mode	✓	✓
Single-wheel mode by cable remote control with deadman switching (20m cable set)	✓	✓
Automatic activation and restart	✓	✓
Automatic switch off, Drive-out support, Start up-lock up protection	✓	✓
Cabinet	306	260
Cabinet with two large analogue scales and automatic switch of measuring range	✓	✓
Four LED indicators for measuring range	✓	✓
Four LED indicators for driving direction	✓	✓
Preparation for reverse mode	✓	✓
Lockable main switch	✓	✓
All indicator lights via LED with very long lifetime	✓	✓
Automatic lamp	✓	✓
Driven-in indicator light for active security control	✓	✓
Visual control via traffic-lights systems	✓	✓
Indicator light for high brake force difference	✓	✓
Special locks		
Silicon seal (protection against splash water)	✓	✓
Preparation for brake force imbalance display	✓	✓
Preparation for the connection to an AHS-Axle tester AT 5002	✓	✓
Preparation for an axle weighbridge (single-piece roller bed)	✓	✓
Preparation for the integration of a wheel- and axle weighbridge	✓	✓
Preparation for the connection to pressure transmitters (either with hose set or radio-controlled)	✓	✓
Preparation for the integration of an AHS pit safety device	✓	✓
PC interface, network-compatibility		
Technical information	306	260
Max. drive overload in kg	16000	16000
Display range in kN	0-6/0-30	0-8/0-40
Measuring range in kN	0-6/0-30	0-8/0-40
Testing speed in km/h	2,3	2,3
Electrical connection in V/A	400/63	400/63
Measurement	306	260
Roller bed (L x W x H) in mm	880/ 4780/210	1000/ 5000/300
Cabinet (L x H x D) in mm	600/ 760/210	600/ 760/210
Weight of roller bed, ramps and cabinet in kg (approx.)	2.500	2.700

AHS ■ PRÜFTECHNIK GmbH & Co. KG Richtstraße 32 D-27753 Delmenhorst
Tel. ++49 (0)4221/9182-0 Fax ++49 (0)4221/9182-20 info@ahs-prueftechnik.de

AHS ■ WILDAU GmbH & Co. KG Gewerbeparkstraße 5 D-15745 Wildau
Tel. ++49 (0)3375/5184-0 Fax ++49 (0)3375/5184-20 info@ahs-prueftechnik.de



This leaflet is based on the technical knowledge of August 2008. Changes and completions may occur. We cannot take over any liability for misprints.